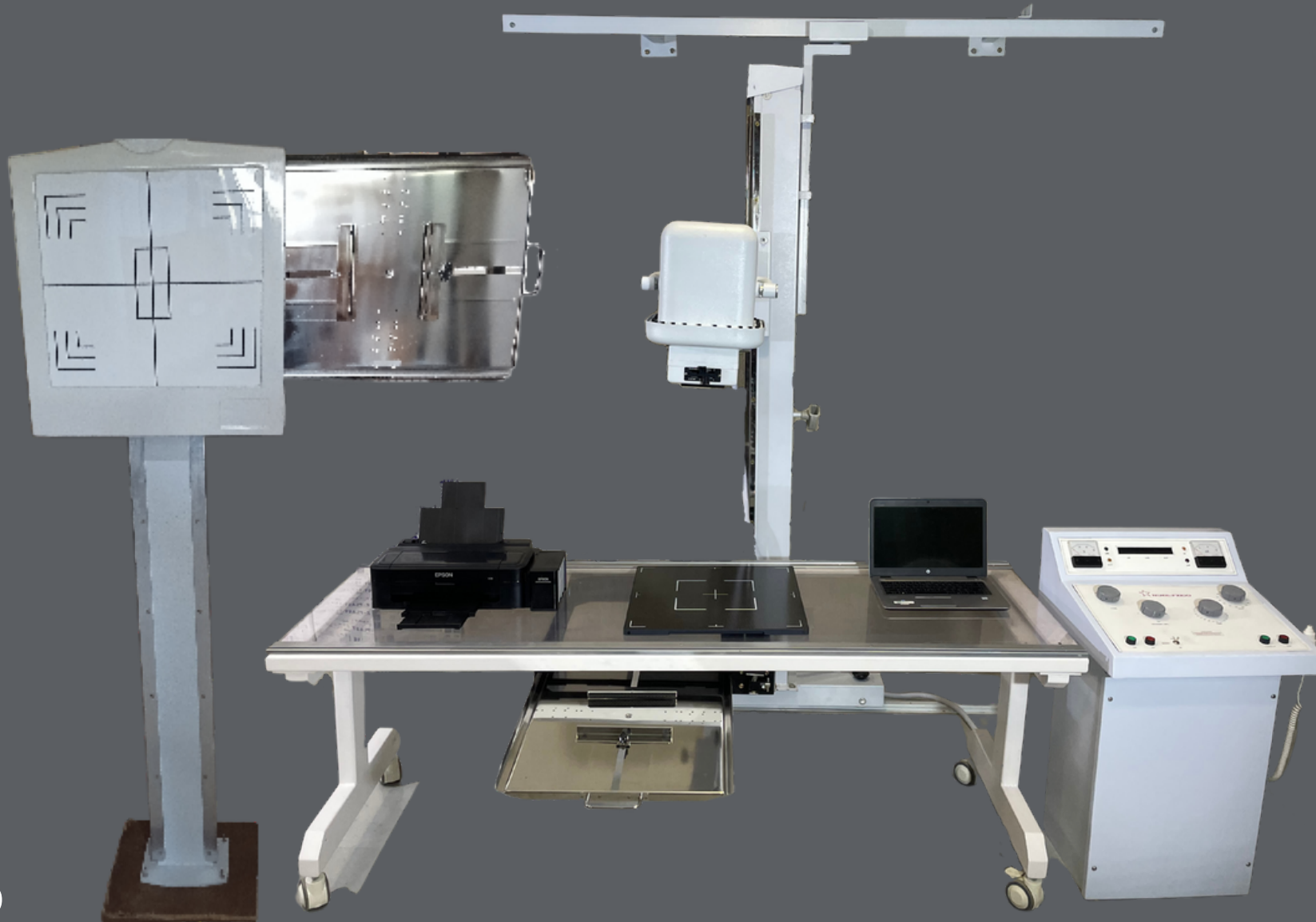


100mA Fixed Line Frequency X Ray Machine With Wireless DR Combo

**COMBO
OFFER!**



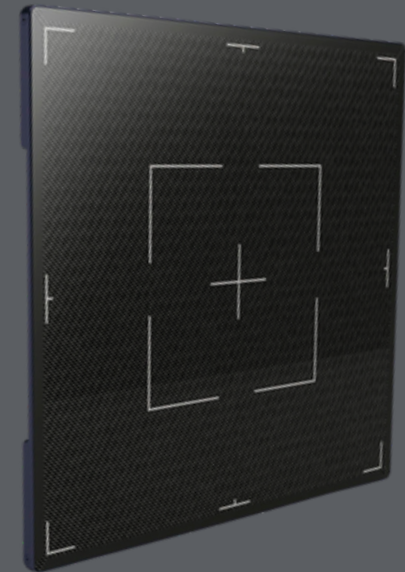
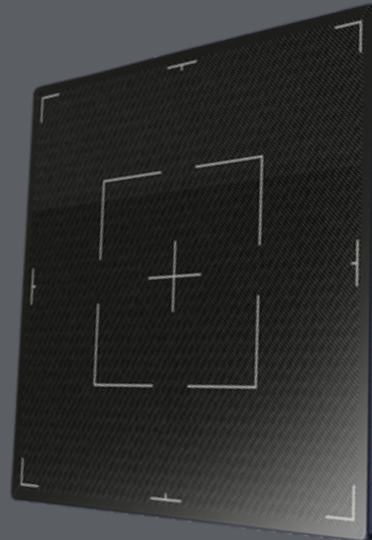
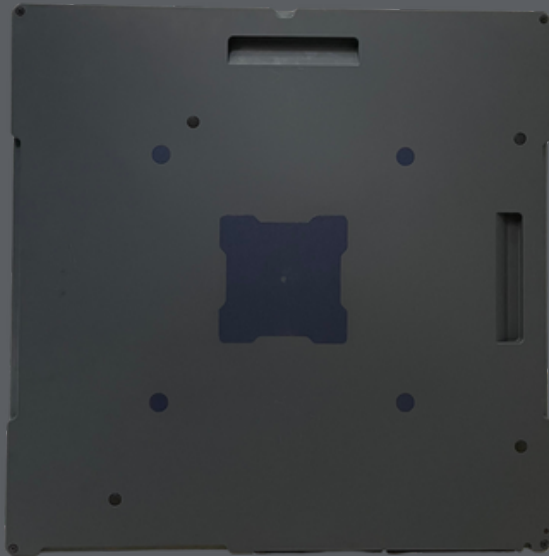
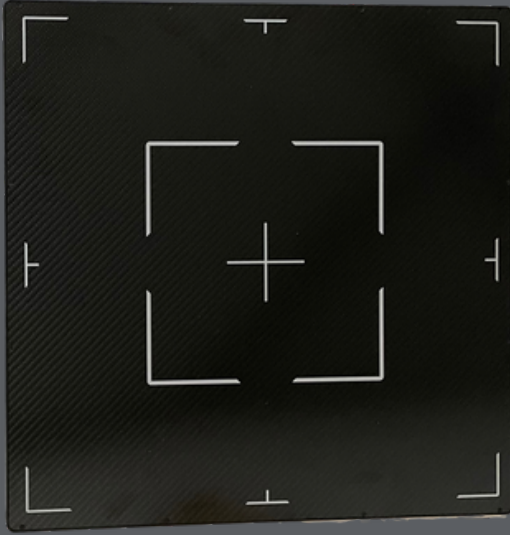
AERB APPROVED



Wireless DR SYSTEM

BRIEF DESCRIPTION

Pixel Pitch	140 μ m
Image Resolution	3,072 x 3,072
Image Size	17x17 inch (430x430mm)
Battery Full Operation Time	12 hours
Water & Dust Resistance	IP55
Drop Test	Up to 50 cm
Weight Bearing for whole surface	< 180 kg
Point Weight Bearing (4x4cm)	< 100 kg
Weight (Without / With battery)	3.3 kg / 4.1 kg (dual battery)



FX100



Control Pannel



Tubehead





Laptop

TECHNICAL SPECIFICATION

Processor Intel(R) Core (TM) i5-6300 CPU
Installed RAM 8GB
System Type 64-bit operating system Pen
and Touch No Pen and touch

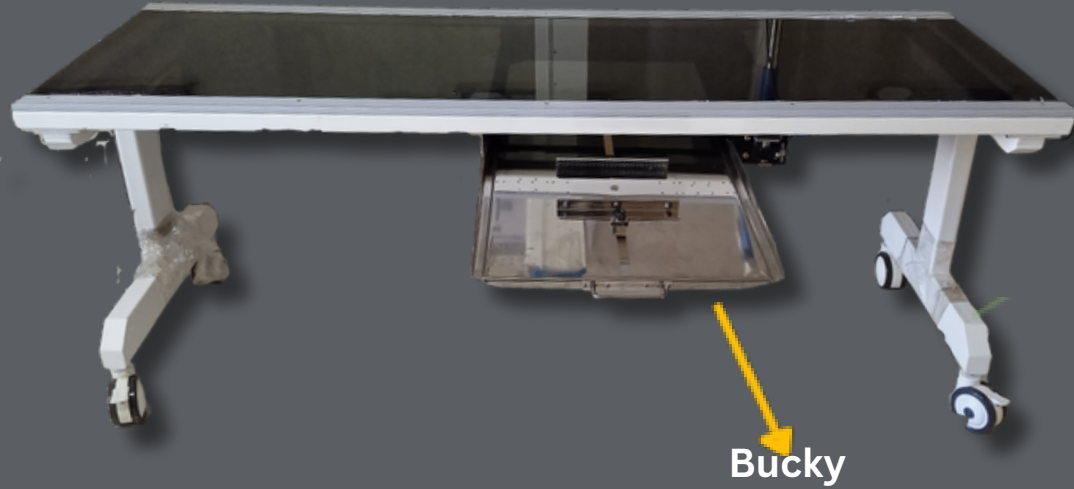


Printer

TECHNICAL SPECIFICATION

Ink Type Inkjet
Colour Output Colour
Connectivity USB
Print Speed (Monochrome) 7 ppm
(mono) Print Speed (Colour) 7 ppm
(colour)





TECHNICAL SPECIFICATION

- 1. Table Dimension: "76 x29.5"inch
- 2. Table Load:200kg
- 3. Table Surface:Polycarbonate

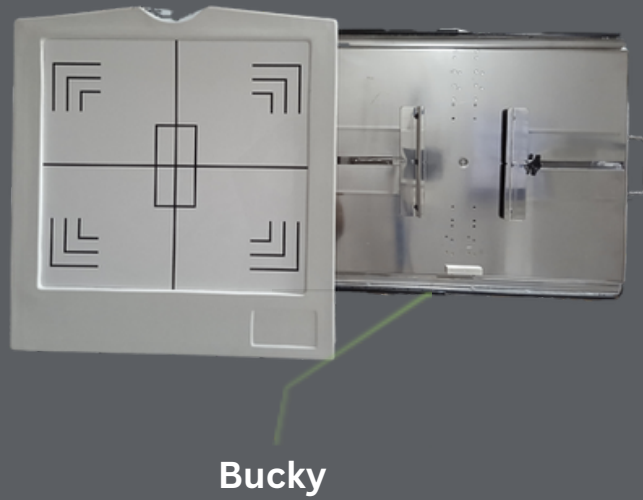




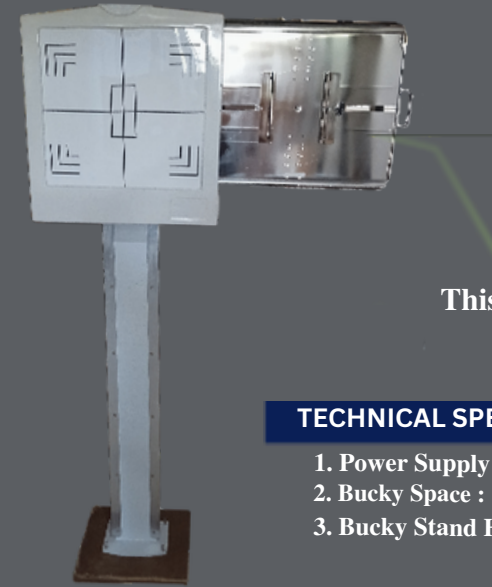
Front



Back



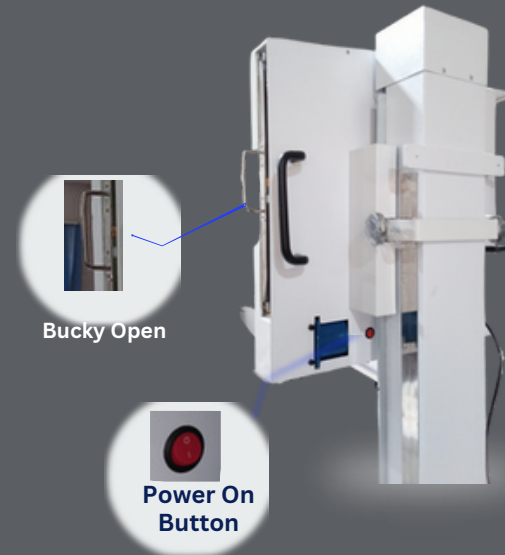
Bucky



This is Bucky

TECHNICAL SPECIFICATION

- 1. Power Supply : 230V
- 2. Bucky Space : 18 X 18
- 3. Bucky Stand Height : 77inch



Bucky Open

Power On Button



Technical Specification



1. Radiography	100 mA at 100 Kvp
2. Tube current	F(0-3 mA), 25 mA, 50 mA, 75 mA & 100 mA
3. Tube voltage	45-100 kvp (15 Steps)
4. Timer	0.02-5 Seconds (24 Steps)
5. X-ray tube	Indian / Imported Stationery Anode



Website

