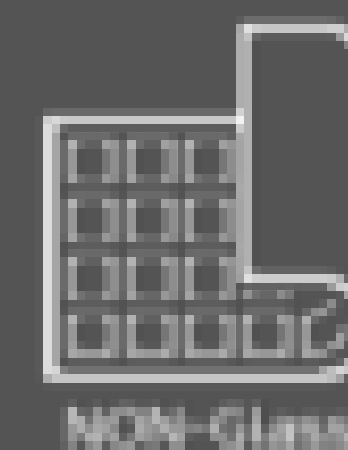
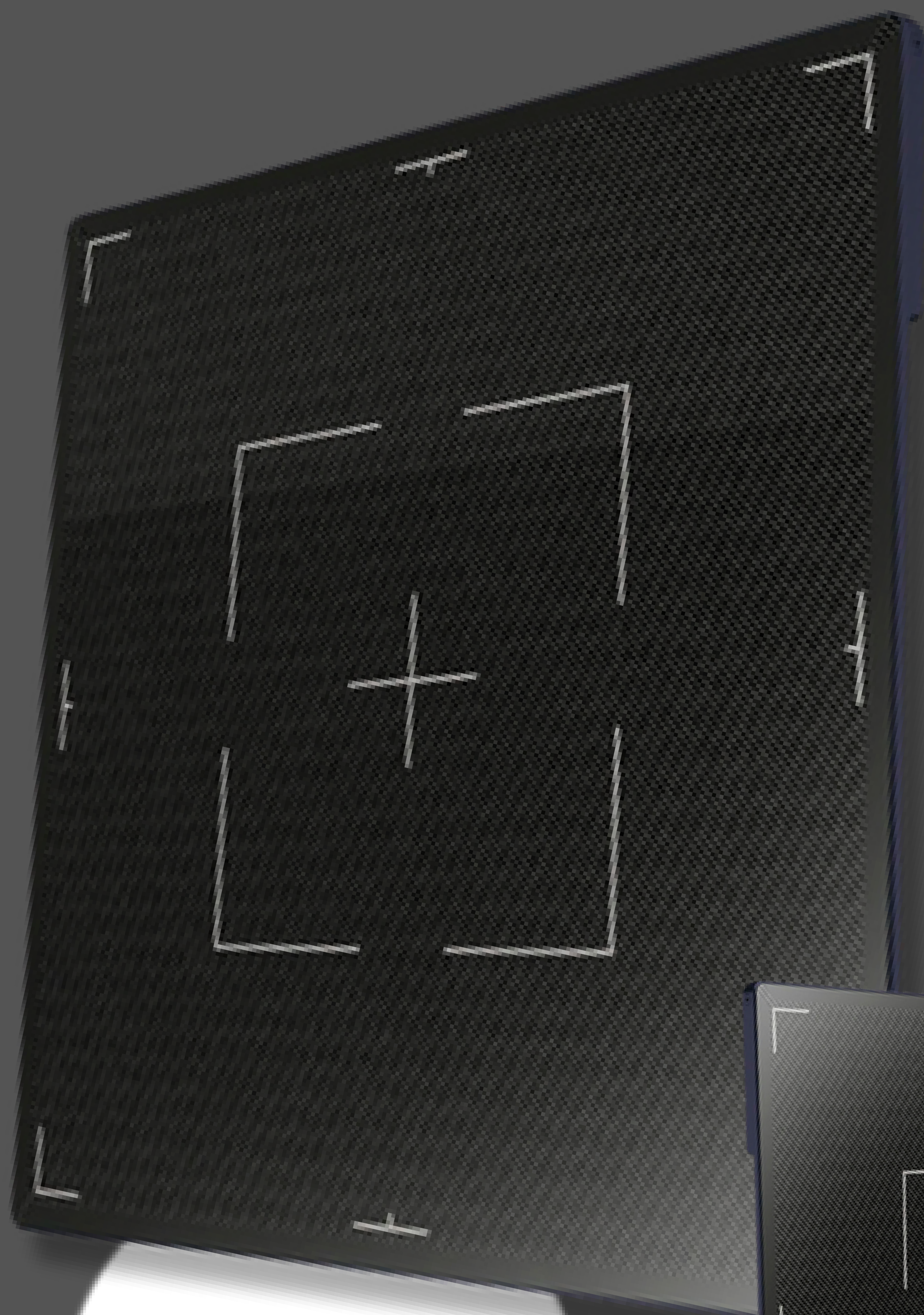


X RAY INDIA 3543DI

Portable X Ray Detector

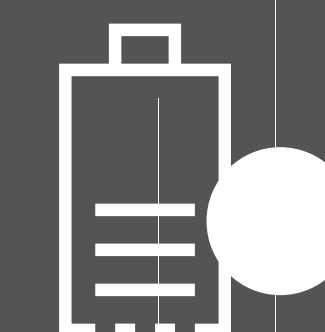


NON-Glass

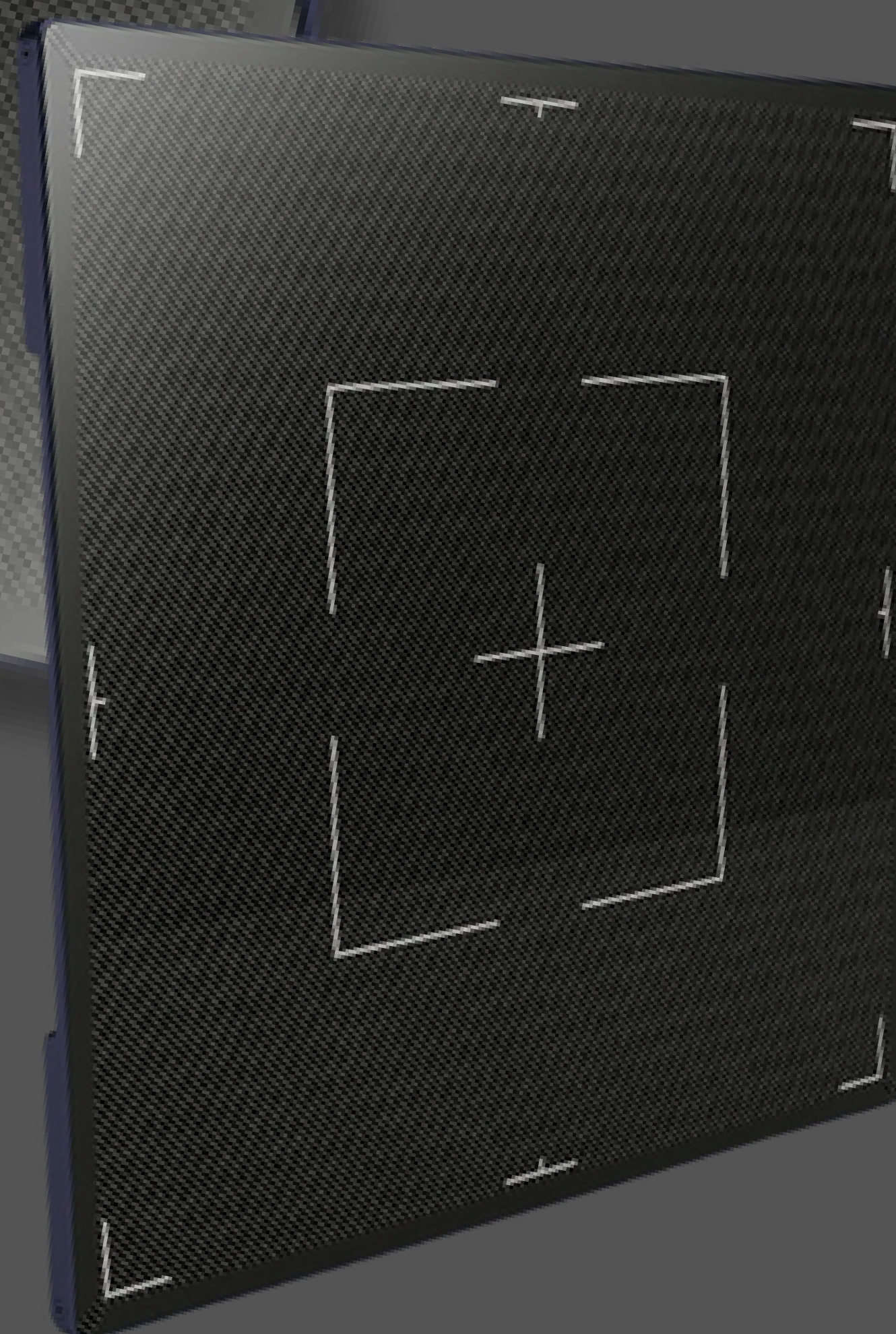
HIGH TECHNOLOGIES FOR
HIGH PERFORMANCE



DURABLE AND ERGONOMIC
DESIGN FOR MOBILITY



USER FRIENDLY AND
CONVENIENT FEATURES



**Wireless DR
System**

**AERB
Approved**

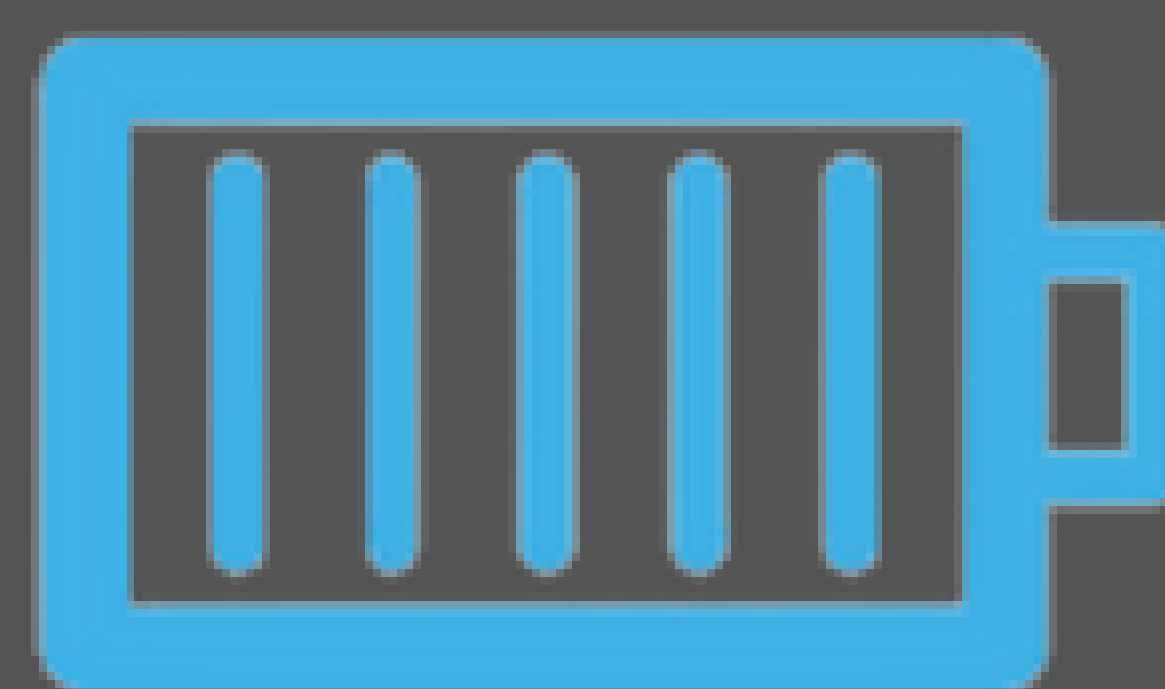


High Image Quality

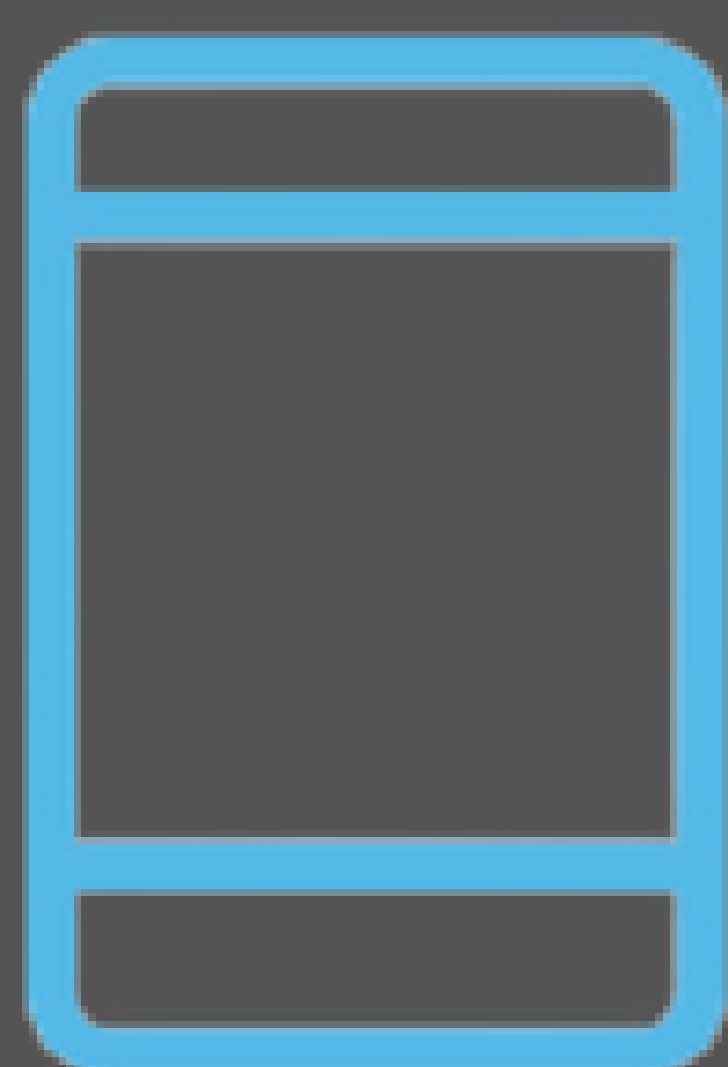
With a high performance Conversion Screen



**On-Board
Storage**



**Super-Long
Battery Life**



**Mobile
Viewing**



**Entirely
Carbon Body**

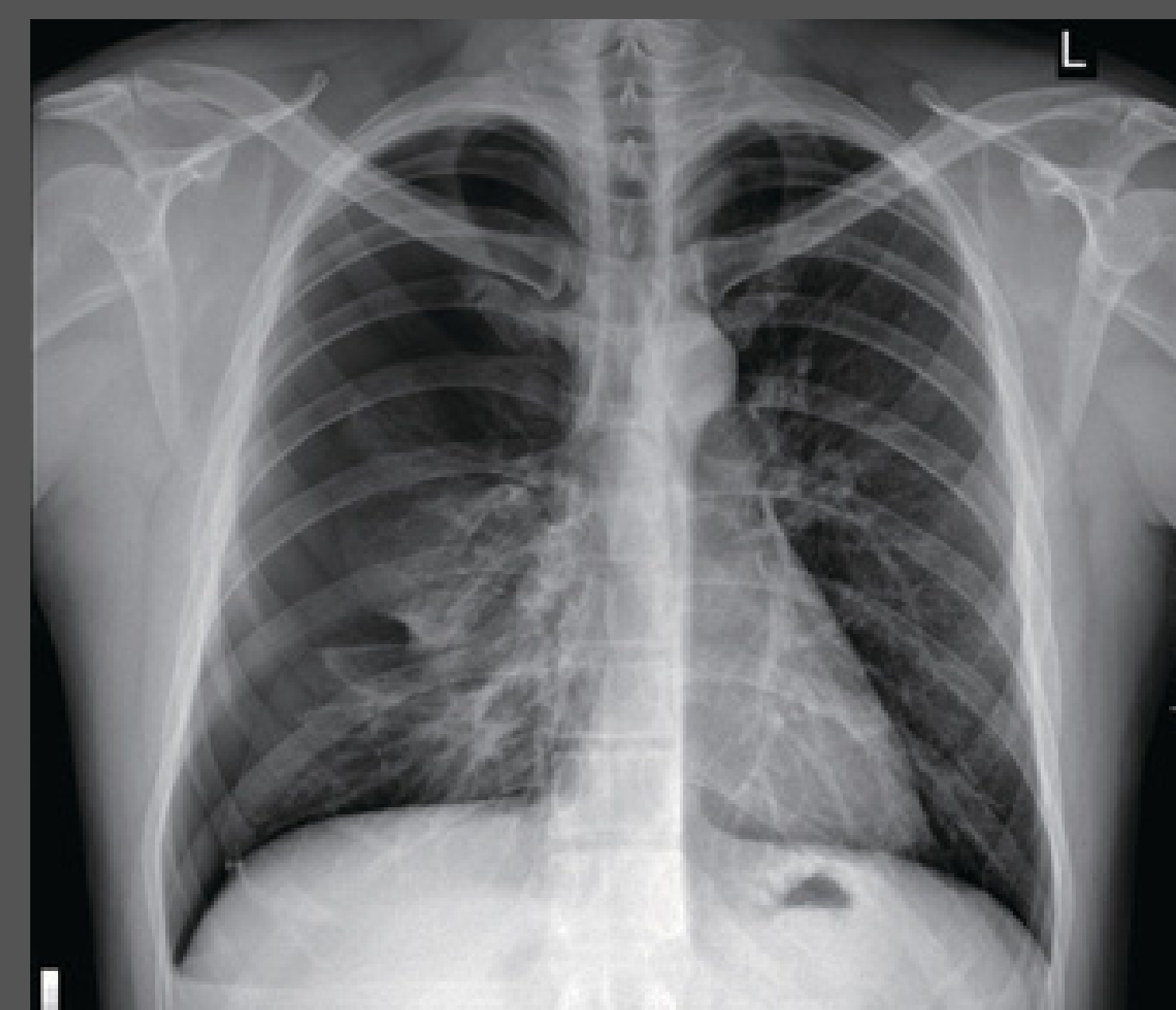


X RAY INDIA 4343DIW is built on the technologies one step ahead to contribute high sensitivity, high performance and high reliability flat-panel detectors for imaging professionals.

High Technologies for high performance



Specially designed IGZO TFT for High Sensitivity and robust Non-glass TFT will bring you finest quality image and durability in any applications



Expose the X-ray, there will be an image for sure

Ultra high sensitive 2xAED technology detects the X-ray with a new AED technology, and it significantly The Starnuke4343DIW detectors adopted improves error and sensitivity generated IGZO TFT and improved to produce a during the detection compared to higher level of sensitivity at low X-ray existing methods.



Extended Battery Life



TFT detectors. The new IGZO TFT improves MTF (modulation transfer function) and The dual battery enables DQE (detective quantum efficiency)the detector to stay up to to show much clear and effective 12 hours in full operation. information on the images. In addition, The detector can be operated for STARNUKE 4343DIW detectors have adopted an entire working day without extra a TFT made of non-glass substrate, so charging. that detectors can be operated in any Two batteries can be charged together mobile environment without any risk of at the same time through dual battery physical impact. charger and charging batteries is also available while they are inserted inside the detector using various charging cables.



Durable and Ergonomic design for Mobility

180kg Weight Bearing & 100kg Point Bearing



X Ray India 4343DIW detectors sustain up to 180kg on the whole surface and up to 100kg on 4 x 4 cm center loading.

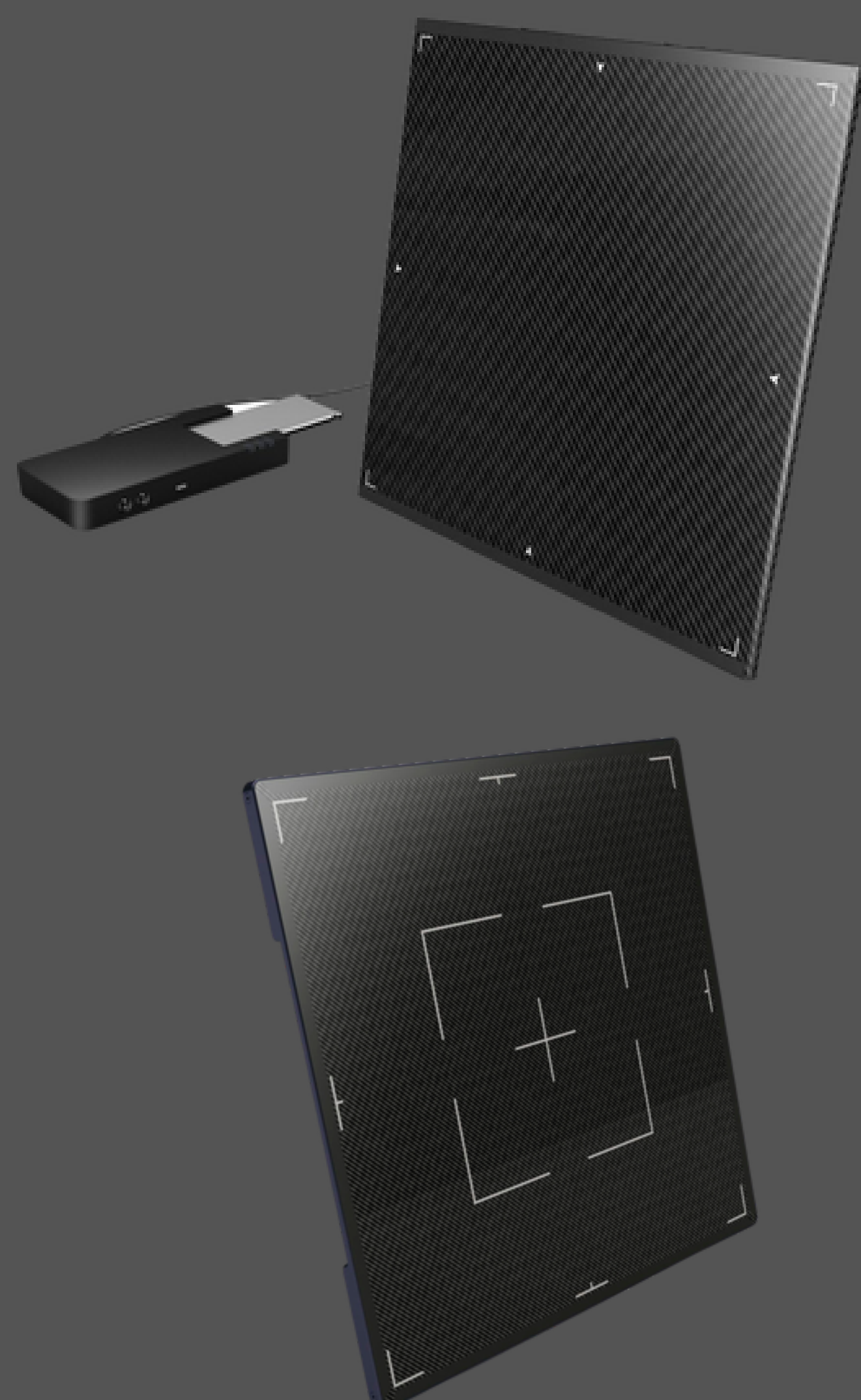
Light & Robust Design with IP55



Metal frame made of Magnesium promises a high level of endurance

while maintaining ultra-light weight.

Each edge of detector are protected against external impacts and daily use through robust metal edge covers & sophisticated design. IP55 Dust & Waterproof rating prevents any leakage of liquids including blood & urine and any dust into the detectors. And this allows easy cleaning of detectors with liquid cleaners without damage.



User friendly and Convenient features

Various & Simple Power Charging

The battery can be charged while installed within the STARNUKE4343DIW detector in two ways.

The waterproof USB-C ports on the detectors can be used for power supply and data transmission. This redundancy preserves the charging and data transmission capability of the detector. Waterproof magnetic cables and connectors are designed for flexibly which operators can maneuver the cables in any direction.

On-Board Image Storage

Up to 200 images can be stored in on-board storage of the Starnuke detector in order to protect acquired images. In a mobile environment, the detector can acquire X-ray images in stand-alone mode without a console software. This function maximizes the mobility of the detectors by allowing the user to have X-ray images with a detector and X-ray source which is minimum equipment configuration.

Dual Battery Charger

Battery can be charged while staying in the detector through power supply cables, however dual battery charger allows faster charging of two batteries at the same time.



Web Base Viewer & Control

STARNUKE4343DIW detectors also support Web Viewer technology which was introduced to the market for the first time by STARNUKE and now became a technical standard for flat-panel detectors.

Acquired images can be viewed through any type of mobile devices based on iOS, Android or Windows in almost real time.

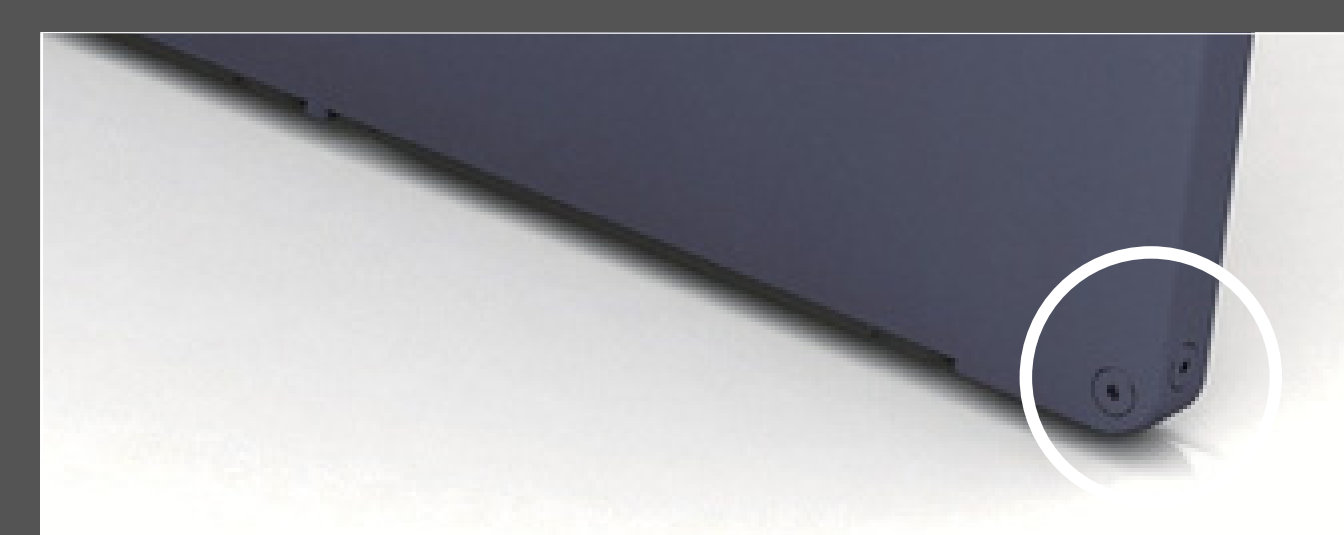
Status Monitoring OLED

The OLED display provides information about Wireless/Wired connection status, Wireless Mode (AP), Battery level and IP address of the detector. The user can understand the detector status and take necessary actions if needed.



Anti-scratch Bump

Each of the four corners and the bottom of the detector has anti-scratch bumps to help keep the product exterior clean.



TECHNICAL SPECIFICATION

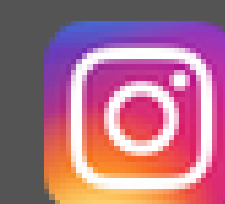
Model	STARNUKE4343DIW	
Application	General Radiography	
Conversion Screen (Scintillator)	CsI / GOS	
TFT Panel	IGZO TFT / a-Si TFT	
Pixel Pitch	140 µm	
Image Data (AD conversion)	Pure 16 bit	
Image Resolution	3,072 x 3,072	
Image Size	17x17 inch (430x430mm)	
On-board Storage	< 100 Images	
Wired / Wireless communication	Gigabit Ethernet / IEEE 802.11ac	
Trigger Mode	High Sensitive 2xAED (Auto Exposure Detection)	
Calibration Mode	ACC (Auto Calibration Control) / Manual	
Durability	* Weight Bearing for whole surface	< 180 kg
	* Point Weight Bearing (4x4cm)	< 100 kg
	* Drop Test	Up to 50 cm
	Water & Dust Resistance	IP55
X-Ray Voltage Range	40-150kVp	
Voltage	AC 100~240V, 50/60Hz, DC18V 3.5A	
Environment	Storage: -10°C ~ 60°C, 10% ~ 90% RH (non-condensing) Operation: 10°C ~ 35°C, 20% ~ 75% RH (non-condensing)	
Battery Type	Lithium-Ion Polymer Battery	
Battery Full Operation Time	12 hours	
Dimensions	461 x 461 x 15 mm	
Weight (Without / With battery)	3.3 kg / 4.1 kg (dual battery)	



X Ray India Private Limited

Contact Us: +91-141-2983862, +91-7073577706

Email: info@xrayindia.net Web: www.xrayindia.net



Website

